

STADIA

MULTI-SPORT SCOREBOARD



A FIBA LEVEL 2 CERTIFIED SCOREBOARD FROM THE WORLD'S LEADING SPORTS ELECTRONICS MANUFACTURER.

Our Stadia SB-F2 multi-sport scoreboard is designed for large halls due to its large size and high-brightness LEDs.

Perfect for sports halls hosting club games right up to national competitions. Features programmable team names which doubles as scrolling message board and includes publicity board area for sponsors logo etc.

Supporting FIBA Level 2 Basketball, Volleyball, Badminton, Netball, Tennis, Hockey, Futsal and more. Includes wireless touch scorepad controller. Optional SB-F2-VEM video advertising expansion module also available.



Product Code: AVS-SB-F2 FIBA LEVEL 2

Related Product:

AVS-SC-F2, AVS-SB-F2-VEM, AVS-SB-F1, AVS-SB-F3, AVS-SB-F3A, AVS-SB-F3-VEM.

Specifications may change without notice



Bodet

FIBA Level 2

Action Venue Systems Pty Ltd

ABN 18 623 133 057

ACN 106 866 282

QBSA License No. 1047346

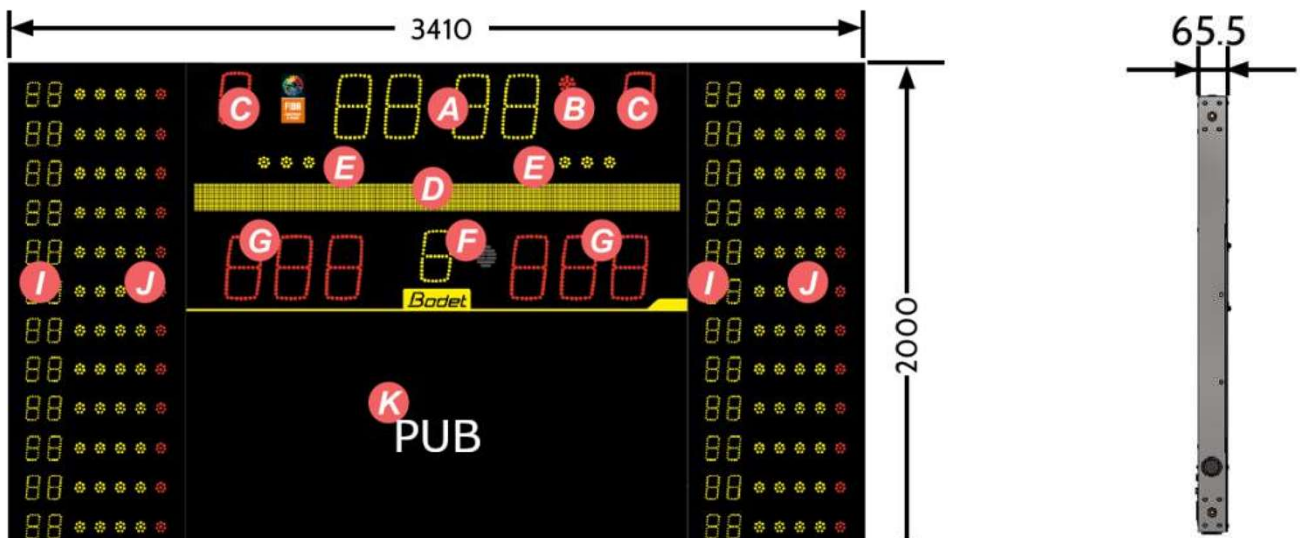
1/10 Prosperity Place, Geebung Qld 4034

P. 07 3161 1759

M. 0417 001 626

www.actionvenuesystems.com.au

DISPLAY DESCRIPTION	DISPLAY CHARACTERISTICS
A) Game clock or local time or time-out timer	4 yellow 250mm digits per team
B) Clock stopped indicator	1 red dot
C) Team fouls	1 red 150mm digit per team
D) Team names	Max. 11 characters, yellow, 120mm per team
D) Scrolling messages	Max. 60 characters, yellow, 120mm
E) Time-out indicators	3 yellow dots per team
F) Period number	1 yellow 150mm digit
G) Score	3 red 250mm digits per team
I) Player number	2 yellow 100mm digits per player
J) Individual fouls indicator	4 yellow dots and 1 red dot per player
K) Publicity	L2000 x H300 mm



TECHNICAL FEATURES	
DIMENSIONS	L3410 X H2000 X D65.5MM
WEIGHT	163KG
CONSTRUCTION	SHOCKPROOF STEEL CASING
PROTECTION RATINGS	IP20, IK09 (DIN STANDARD 18032)
ENVIRONMENT	INDOOR OR UNDER SHELTER
LED TECHNOLOGY	HIGH LUMINOSITY SMD LED
OPTIMAL VIEWING DISTANCE	120M
READING ANGLE	160 DEGREES
HORN	INTEGRATED (120dB AT 1M)
COMMUNICATION	WIRELESS OR WIRED
POWER SUPPLY	240V AV, 50/60Hz
POWER CONSUMPTION	135W



Optional SB-F2-VEM video advertising expansion module also available for this model

